



Est. 1897

The Heath & Hampstead Society

NEWSLETTER

May 2024

Vol 55 No 2



'Frosty morning, light and copper beech'

Annual Report for the Year 2023–2024

Contents

	Page
Notice of the Annual General Meeting 2024	7
Candidates for Election	8
Annual General Meeting 2024 invitation	8
Treasurer's Report for 2023 <i>by Maureen Clark-Darby</i>	9
Trustee appointment invitations	10
Remarkable Homes of NW3	11
Heath Report <i>by John Beyer</i>	12
Heath Hands	14
Kite Display	15
Natural Aspect Summer Concert	16
The 2024 Springett Lecture	17
Town Report <i>by Andrew Haslam-Jones</i>	18
Planning Report <i>by David Castle</i>	21
Less congestion and pollution in Hampstead <i>by Jessica Learmond-Criqui</i>	22
The school run problem <i>by Adam Harrison</i>	24
Notes from the "Rubbish Conversation" <i>by Marc Hutchinson</i>	26
Hampstead Theatre	29
Hampstead Summer Festival	30
Proms at St Jude's <i>by Kate Webster</i>	31
Upcoming Events at St John's Downshire Hill	32
Musical Events St John-at-Hampstead Parish Church	33
Maggi's Royal Free <i>by Helen Muir</i>	34
Lifecycle: a new visual project <i>by Emilia A. Leese</i>	36
Burgh House & Hampstead Museum	38
Camden Art Centre	39
Events at Keats Community Library	40
Heath Walks 2024	42

Front cover: The Society runs a regular photographic competition; use #myhampsteadbeath on Instagram or Facebook to enter. Greg Hattingh is the current winner. Professional photographer and author, Matt Maran, is the Society's judge for the competition: "In this simple composition, Greg skillfully captures the beauty of the Heath shrouded in rare frost, juxtaposed against the warmth of the sunrise colours. This also serves as an example for photographers making the effort to get up early, highlighting the potential rewards awaiting those willing to brave the chill." See the Society's website for competition rules

by Marc Hutchinson

Writing the annual report to our members sometimes impresses even its author with the range and variety of activities, campaigns and events which fill the Society's year. This report is no exception.

Your Chair

I am currently in my tenth year as the Society's Chair and the time has come to begin the process of finding my successor. Although I continue to enjoy such a personally fulfilling role, I believe one has probably given one's best after 10 years in the office, and the Charity Commission frowns on trustee chairs who serve for too long. Accordingly, I am asking our members whether any among them would be interested in discussing the possibility of being co-opted onto the General Committee with a view to learning about my role in the internal workings of the Society, with a further view to succeeding me in 2025. It is my present intention to seek to remain on the General Committee as an ordinary trustee after I have stepped down as Chair. Rather than publishing my job description in this Newsletter, I would invite those interested to call or email me in confidence as a first step: 07768 827 405, marchutch54@gmail.com.

Your Secretary

Evelyn Ellis has served as our most diligent and charming Secretary since 2017 and is also now seeking to retire from that office, although she has kindly offered to remain in office until her successor is found. Evelyn has performed two roles for the Society, acting also as *de facto* membership secretary where she handles the administrative (rather than financial) side of new and renewing memberships. The present seems an appropriate moment to seek to separate these two

Annual Report for the Year 2023-2024 (cont)

distinct roles, which is why advertisements for each of them appear on page 10. Members who are interested in learning more about these roles are invited to contact me in confidence in the first instance (contact details as above).

Annual General Meeting

Details of this year's AGM can be found on pages 7-8. Our welcome guest speaker is well known to the residents of Hampstead and Belsize. He is David Percy, and he will be giving us a short, illustrated talk on his new publication *Remarkable Homes of NW3*. I hope to see many of you there.

Jenifer Ford

Jenifer Ford, a local painter and lifelong supporter of the Society, bequeathed to the Society some 30 paintings – of the Heath and its trees, and roofscapes around Parliament Hill – for sale to raise funds for the Society. I am pleased to say we have sold well over half of them, and I would invite members who have not yet done so to view them on our website. Prices range from £50 to £200, in the latter case for a substantially sized framed oil.

Heath

TOM and new senior Heath staff

These last 18 months have seen the City run a Target Operating Model (TOM) for the wholesale management reorganisation of Heath staff. On the one hand, this was a long overdue exercise, made more urgent by the extended disruption of the pandemic. On the other hand, for a host of reasons, the reorganisation took much longer than expected, although it is now in its last phase.

We have welcomed three new individuals to key senior management roles: William (Bill) Losasso,

the new Natural Environment Assistant Director and Heath (and North London Open Spaces) Superintendent; Charlotte Williams, the new Head of Operations and Parks, Environment Department; and Emily Brennan, the City's new Natural Environment Director. The remaining key post to be filled is a newly created one to be responsible for fundraising, event management, Heath "partnerships" and volunteer relations. It is hoped this appointment will have been made by the early summer. Members had the chance to meet Bill and Charlotte at our 2023 Christmas Party, and we look forward confidently to a productive and supportive working relationship with them. There has been a steep learning curve and we are very aware of how hard they have worked to get into their multi-tasking roles.

Unfortunately, the Heath faces a temporary shortage of constables, in part as a result of illness. This is being urgently addressed and Heath users are grateful for the coverage currently provided by Parks Patrol. We have anecdotal evidence reflecting very favourably on their work, attitude and approachability.

Athletics Track at Parliament Hill

The City has spent over £2million on the timely refurbishment of this important facility to bring it fully up to international standard. It was formally opened by the Lord Mayor on 17 April. This was a costly and technically complicated project, with unexpected construction problems having to be solved in real time along the way. We congratulate the City and Charlotte Williams (see above) in particular for managing the project so successfully.

Bathing Ponds and Constable's Pond

The other great project, almost completed and deserving congratulation, has been the construction of fully disabled access to all three bathing ponds,

including the installation of hoists to allow immobile swimmers to enter the water. The works have cost the City over £1 million and the opportunity has been taken to “green” the new infrastructure and fencing.

The re-creation of the historic pond at Branch Hill – “Constable’s Pond” – was also successfully completed in 2023.

Wildlife

Heath swans are prominent and much-loved pond inhabitants, and many of our members observe their full seasonal breeding cycle culminating in the (enforced) departure of the fully-grown cygnets. Our Heath Sub-Committee member, Ron Vester, monitors and records their lives and, with Heath staff, liaises with the Swan Sanctuary to ensure their welfare and, sometimes, survival. Swans and other waterbirds suffer from two principal dangers: dogs and illegal fishing. The threat from dogs has, we believe, been reduced, not least by the licensing of commercial dog walkers and the vigilance of Parks Patrol (see above). The injury to birds caused by illegal fishhooks and abandoned hooks and lines is the result of unlicensed, and illegal, fishing on the Heath. The members of the Hampstead and Highgate Angling Society (est. 2018), with whom we have good relations, are not responsible for this state of affairs and are as unhappy about it as we are. So, we are discussing with them what recommendations we can jointly make to the City as to how to combat illegal fishing and its injury to birdlife.

I have mentioned in previous issues of the Newsletter the problem of contamination of the water in some of the ponds by the chemicals in the flea powders used by dogs who swim. The intended Newsletter item on this topic is not quite ready and so will appear in the October Newsletter. However, two things are clear: the problem is serious and must be addressed; and the

means of doing this will have to be educational rather than punitive. For example, commercial dog walkers, local veterinarians and dog-grooming parlours are going to be informed about the problem and the proposed solutions.

Fringes of the Heath

The Society has taken two initiatives to protect fringes of the Heath from harmful development and to enhance biodiversity. The first is a submission to Camden Council of a proposed Article 4 Direction which would remove “permitted development” rights from gardens abutting the Heath, and so force landowners to seek planning permission for “building over” their existing gardens. The second is a collective submission, again to Camden Council, in the context of preparation of the new Camden Local Plan, of a series of extensive and expert recommendations specifically to improve biodiversity on the Heath fringes. We propose the development of a nature-rich green corridor from Hampstead Heath into Kentish Town through improvements in a chain of five Camden Sites of Interest for Nature Conservation (SINCs) and their connection through green infrastructure established across future development on three Camden Site Allocations: Murphy’s Yard, Regis Road and West Kentish Town Estate. We think the relevant Camden officers are sympathetic to our approach.

Events

What were planned as one-off sesquicentenary events have, owing to their popularity, established themselves as annual fixtures: the Kite Festival held on 2 July 2023 and the Natural Aspect Concert held on 3 September 2023. The latter drew a record audience of over 1,500. We shall hold these events again in 2024, as well as organising the return visit of sheep to the Heath between 6–16 September 2024.

Annual Report for the Year 2023-2024 (cont)

Thomas Radice, a long-standing member of the General Committee and the Heath Sub-Committee, has, since 2007, organised our annual programme of monthly Heath walks. Thomas is now handing over management of the programme for 2025 to our new Heath Sub-Committee member, Tereza Pultarova (see below). I wish to record the Society's gratitude to Thomas for the skill, time and effort he has put into this role over so many years. Thousands of people have, over those years, enjoyed the fruits of his work.

Town

The problems with which our Town Sub-Committee grapples seem, at least to me, more intractable than those affecting the Heath.

Rubbish

This Newsletter carries on page 26, a summary of the "Rubbish Conversation" which we held with Camden Council and Veolia last year. As you will see from the summary, it is unreasonable to blame Camden and Veolia entirely for the problem of uncollected rubbish and litter. The primary causes are pedestrians who casually litter (the Heath faces the same increasing problem), householders who refuse to comply with the clear protocols about the correct and secure form of domestic waste container and the timing of its being put out in the street, and local shop owners who, *by existing parliamentary law*, are allowed to engage their own commercial rubbish collectors who then, with impunity, provide a cheap and unreliable service (instead of Council-contracted Veolia, who can and do provide a consistent and frequent scheduled service to some shops). There is only so much Camden and Veolia can do to combat such anti-social behaviour.

Traffic

For five years now (the pandemic intervening),

Jessica Learmond-Criqui, a trustee of the Society, has been leading the Hampstead Transport Partnership, a coalition of community groups, aiming (with some CIL funding) to improve local safety and the environment. The Partnership is looking to develop a joined-up strategy for travel, building on similar neighbourhood plans in the Hampstead Town, Redington and Froggnal areas. PJA Consultants (Phil Jones Associates) have been selected by the Partnership to undertake a wide Community Engagement, inviting local people to discussions before presenting a Strategy Report to Camden Council in the summer. Please see page 22 for more information about the consultation.

Councillor Adam Harrison, Deputy Leader of Camden Council and Cabinet Member for a Sustainable Camden, has kindly written a piece on Camden traffic policy in this Newsletter, following on from an informal and helpful discussion we had with him last year. Camden accepts the need to avoid an unjoined-up, street-by-street approach (despite lobbying by affected street residents) to the problem of rat-runs and excessive traffic in residential streets.

E-bikes and E-scooters

We continue to lobby Camden Council about the problems associated with these. Unfortunately, some of the problems are wholly beyond the Council's control; for example, bike users smash the payment and satellite-tracking mechanism on the bike before riding it, for free, and then dumping it wherever.

Finger posts, street name tiles and post boxes

The Society continues to lobby Camden for the refurbishment of the finger posts and tiled street names around Hampstead, and to lobby the Post Office over the dilapidated state of our local post boxes.



The reclaimed York stone in the new streatory in South End Road

SEGG

We thank Ward Councillor Linda Chung and intending Hampstead resident Dr John Vedelago for their leadership of SEGG, the newly formed South End Greening Group. The catalyst for this was the discovery that, without proper consultation, Camden Council had suddenly started constructing, with unattractive concrete slabs, the new “streatory” at the top end of South End Road. The Group has lobbied for changes to the plans, including a pavement of reclaimed York stone, the inclusion of rain gardens, and an overall design that will withstand the regular flooding at South End Green which, as a result of climate change and as local residents and shops know all too well, is becoming more frequent.

Plaques

Planning and executing the installation of plaques commemorating famous Hampstead residents require a very flexible timetable, given the number of consenting parties involved. Although none has been installed since May 2023, thanks to our Plaque Selection Panel under Frank Harding, principally assisted by Juliette Sonabend, several are in the pipeline for 2024.

Planning

I am pleased to say we have had more successes than disappointments this past year.

After years of lobbying, Camden Council has resolved that the buildings at Queen Mary’s House, at the top of East Heath Road, must be preserved and therefore the site cannot be used for a brand-new, high-rise development.

At the time of writing, no new planning application has been submitted in respect of the development of the site known as Murphy’s Yard at Gospel Oak but, following the withdrawal of the original development application, the Society, with other local civic and amenity groups, has been in touch with Camden Council and the developer in relation to an acceptable scheme.

We congratulate the Vale of Health Society for recently persuading Camden Council to take enforcement action against illegal building on the site of the Garden House in the Vale of Health. Members will know that this site has been the subject of attempted development for two decades, on one occasion in 2007 leading the Society to a successful hearing in the Court of Appeal to prevent unlawful development.

The owner of Bren Cottage at the South Fairground Site in the Vale of Health, Jita Lukka, died recently.

Annual Report for the Year 2023-2024 (cont)

Either she or the current owner recently has erected bollards across both ends of the road adjoining the site which leads from the Vale onto the Heath and which is used for emergency access in both directions. With the Vale of Health Society and the City, we are asking Camden Council to take enforcement action for the removal of the bollards. Members will recall that, between 2017–2020, Camden took enforcement action against Jita Lukka compelling her to demolish the house she had illegally built on the site and to remove the concrete barriers which she had erected across the access road.

So far as we are aware, there has been no further attempt by the owner of the North Fairground site to obtain a Lawful Development Certificate for Existing (Mixed) Use, as a first step to turn the site into a commercial caravan park.

These are early days and no planning application has been submitted, but we will be opposing the possible proposal to erect a huge residential tower block at Archway, which will be an eyesore looking eastwards from the Heath.

The continuing disappointment to be recorded is the lamentable state of Heath House by Whitestone Pond. Camden Council does not have the power to compel removal of the scaffolding which disfigures the whole area. However, a revised and consolidated planning application has been submitted for restoration of the house, as a residential house.

Urban trees

The Society is indebted to Vicky Harding for her untiring work on protecting Hampstead's trees. She spends a lot of time in her role as the Society's Tree Officer helping local residents protect their trees against spurious claims that the trees are latently demolishing a nearby house, marshalling the expert

evidence when a tree is threatened with destruction, and working closely with the (overworked) tree officers of Camden Council. "Green corridors", and the trees within them, are an important part of maintaining and enhancing local biodiversity.

Lectures

We are very grateful to Justin Rowlett, Climate Editor, BBC, for his live and streamed lecture to us entitled "Climate Change – a report from the front line" which he gave on 25 May 2023 as the Inaugural Hunter Davies Lecture. Our thanks also go to Jonathan Meares, the City's Conservation and Trees Manager for the Heath, who gave the annual Springett Lecture entitled "Hampstead Heath and Climate Change", also live and streamed, on 28 September 2023.

Sub-Committees

These continue to be expanded and replenished, and we welcome:

Town Sub-Committee: Daniel Rodolfi, local entrepreneur and part of the management team at the Rebel Business School; and Jenny White, lawyer and local neighbourhood association chair.

Planning Sub-Committee: Leonardo Carpentieri, solicitor; Edward Cousins, barrister and judge; and Alexander Smaga, architect.

Heath Sub-Committee: Tereza Pultarova, science and technology journalist.

Conclusion

I would like to thank our two Hampstead Ward councillors, Stephen Stark and Linda Chung, who assist us and liaise with Camden in relation to so many of our endeavours in the Town, and to thank you, our members, for the financial and moral support which sustains us from year to year.

Notice of the Annual General Meeting 2024

The Heath & Hampstead Society – The 126th Annual General Meeting of the Society on Wednesday 12 June 2024 at 7.30 pm at St Stephen's, Rosslyn Hill, London NW3 2PP

Agenda – The business of the meeting will be as follows:

1. Approval of the minutes of the 125th Annual General Meeting held on 22 June 2023.
2. Election of Lord Mance as President.
3. Chair's report for 2023–2024.
4. Treasurer's report on the Society's examined financial statements for the 2023 financial year and adoption of those financial statements.
5. Appointment of Fisher Phillips LLP, Chartered Accountants, as the Society's auditors for the 2024 financial year.
6. Determination of membership subscription rates for the 2025 financial year. The trustees propose that there should be no change to the rates.
7. Determination of the limit on free/discounted memberships. The trustees propose that there be no change to the current limit of 200, approved by members in 2019.
8. Election of Officers and other Members of the General Committee.

Officers

The following candidates have been duly proposed for election to the following positions:

Chair: Marc Hutchinson

Treasurer: Maureen Clark-Darby

Secretary: Evelyn Ellis, subject to another candidate being proposed

General Committee Members

Latoya Austin, Jessica Learmond-Criqui and Maddy Raman have been duly proposed for election for a second term of three years.

Note: Vicki Harding, Thomas Radice and John Weston continue the terms for which they were elected. Frank Harding and Robert Linger complete their second terms as elected members and are therefore not eligible for re-election this year. However, the General Committee may, after the Annual General Meeting, appoint them to vacancies on the General Committee. The Chairs of the three Sub-Committees are trustees and members of the General Committee, but they are appointed from time to time by the General Committee, not elected. Professor Jeff Waage is also appointed, not elected, as a trustee and member of the General Committee in his capacity as the Society's representative on the Hampstead Heath Consultative Committee.

9. Any other business.

By order of the Secretary
10 April 2024

Note: this relates to the figure of 200 specified in Rule 10(4):

"10(3) Notwithstanding Rules 10(1) and (2), the General Committee may determine, with effect from 1 January 2017, that the applicable annual subscription for a new member shall, for the member's first year of membership only, be less than the applicable annual subscription determined under Rule 10(1).

10(4) The General Committee may make such a determination only as part of a particular scheme designed to increase the paid membership of the Society, and so that the amount of subscription income thereby forgone in respect of such new members does not exceed, in any year, an amount equal to the aggregate of subscription income (for a standard annual individual membership) that would be payable in that year by, subject to Rule 10(5), 200 members.

10(5) The number of members specified in Rule 10(4) may be changed by resolution of the members of the Society at any general meeting of the Society."

Candidates for Election

Latoya Austin has worked within City law firms, investment banks and FinTech companies within legal contract and transaction management teams. She has lived within the Hampstead area for over 16 years and has been a member of the Heath Sub-Committee since 2015. Latoya has also served as a trustee on the General Committee for three years with particular responsibility for the Society's social media. She is also currently appointed as a magistrate within the London area.

Jessica Learmond-Criqui is an employment and immigration solicitor. She has lived in Hampstead for over 36 years. Jessica joined the Society over 25 years ago and has served on the Society's Town Sub-Committee since 2007 and as a trustee on its General Committee since 2013. She has been involved in the planning work of the Society and has campaigned in Hampstead on a variety of initiatives. Jessica is involved in the Hampstead Transport Partnership which brings

various voluntary groups together, including the Society, to discuss and engage with the community on actions to make Hampstead Town and Frognal Wards a pleasant environment for residents addressing, among other things, congestion and pollution issues. She is a governor of UCL Academy.

Madhavan (Maddy) Raman is a television editor who works on some of the UK's most popular primetime TV shows as well as sport and news programmes. He and his wife have lived in the area for two decades, and their three children, who were all born in Hampstead, attend a local primary school. Maddy serves on the Town Sub-Committee and has helped the Society defeat many licensing applications that have not been in the community's interests. He is the chair of West Hampstead Primary School, where he has been a governor for 14 years, and is a member of the Camden Music Hub Steering Group.

The Heath & Hampstead Society

Please join us for our Annual General Meeting and Reception

St Stephen's, Rosslyn Hill, London NW3 2PP

Wednesday 12 June 2024 7.00pm (doors open)



Est. 1897

7.00pm Reception – Refreshments will be served. Trustees and sub-committee members will be present to talk about their work. Come and learn more about that work over the last year.

7.30pm Annual General Meeting

8.30pm Guest Speaker – David Percy FRSA ARPS, an award-winning filmmaker, photographer and historian, will give an illustrated talk about the new publication '*Remarkable Homes of NW3*' which he has produced with KIRE. The book celebrates the outstanding homes of NW3 (Belsize Park, Hampstead and parts of Primrose Hill) which have beautiful designs, interesting stories and history, and, importantly, those which enable more fulfilled lifestyles for their owners based on their unique characteristics.

We are grateful to the St Stephen's Trust for hosting our meeting

Treasurer's Report for 2023

by Maureen Clark-Darby

The Society is pleased to present its Financial Statements for the year ended 31 December 2023.

The Society reviews its accounting policies each year. The trustees are satisfied that the current policies meet the Society's needs and circumstances. These policies, which have not changed, are disclosed on pages 9 and 10 of the Financial Statements.

The operating surplus for 2023 was £3,162 (2022: deficit of £1,368). The Society received a bequest from the estate of the late Jenifer Ford, resulting in a new restricted fund of £2,280.

The Society made an unrealised loss of £104 on its investments. The resulting total gain for the year was £3,058.

Membership subscription income decreased by 4% year on year – 2023: £26,329 (2022: £27,651). This decrease is due to timing differences and is not significant.

Membership increased year on year, standing at 2,099 at the end of 2023, of which 542 were life memberships.

Donations: The principal donations received during the year were £2,793, from Society trustees, for unrestricted funds.

Dividend income decreased for the year to £254 (2022: £257). Interest income increased substantially for the year to £3,740 (2022: £902).

The Society's running costs decreased in 2023 to £33,190 (2022: £35,190).

The trustees believe that the Society's Capital and Reserves are satisfactory at £60,341, of which £33,673 are held in unrestricted funds and £26,668 in restricted funds.

The Society wishes to thank Fisher Phillips LLP, Chartered Accountants, for carrying out the Independent Examination of the Financial Statements for 2023.

Fisher Phillips LLP, Chartered Accountants

Fisher Phillips LLP is a proactive and forward-thinking UK firm of Chartered Accountants based in North West London providing accountancy, taxation and business advisory services to individuals and businesses.

The Society is very grateful to Fisher Phillips LLP for examining the Society's annual financial statements each year.

Contact: info@fisherphillips.co.uk / T: +44 (0)20 7483 6100

Address: Summit House 170 Finchley Road, London NW3 6BP

Trustee appointment invitations

Secretary

The duties of the Secretary are neither onerous nor time-consuming. Working closely with the Chair, the Secretary is a trustee of the Society and attends the six bi-monthly evening meetings (January, March, May etc) of the General Committee (the trustees) in the Chester Room at Keats House and the annual general meeting held in June at St Stephen's, Pond Street, and writes the minutes of those meetings. The Secretary books the venues for those meetings and records the attendance.

The Secretary, as a trustee, would be expected,

but not required, to attend and help to host most of the Society's events, including assisting on the Society's recruitment stalls at those events.

(The Secretary is not expected to prepare the notices and agendas of meetings, the content of all of which is decided and prepared by the Chair, does not submit the annual return to the Charity Commission, and is not responsible for production or distribution of the Society's newsletters.)

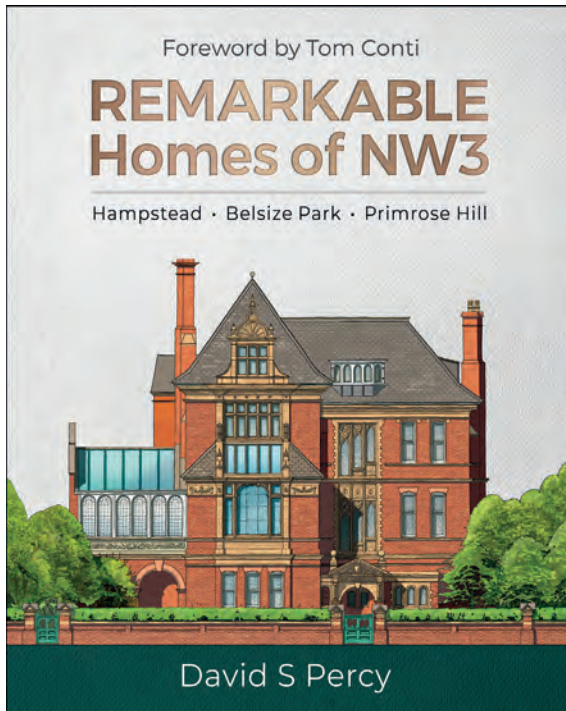
Membership Secretary

The Membership Secretary is the first port of call for members, and handles the administrative side of admission of new members and the renewal of annually-renewing members. Members join and renew online and occasionally by post. There is a simple and standard process to be followed in completing the admission or renewal process. The Membership Secretary banks the few subscription cheques (most pay by BACS or PayPal) and also handles, by phone or email, ad hoc membership queries. The Membership Secretary liaises as

necessary with the Treasurer and the bookkeeper.

The busiest time is early in the new year when most annual members renew. The time entailed in the role, averaged out over the entire year, is, we think, three to four hours per week but the role does not require weekly activity.

This is an important role in the resilience and functioning of the Society and we hope that a member can be found to take it on. It would be up to the applicant to decide whether they wished to join the General Committee as a trustee.



“David S Percy’s beautiful book brings out the remarkable variety of architecture from magnificent mansions to charming cottages, built in so many different styles over the last 300 years or so, that make every Hampstead street so intriguing. He looks at who built them, how they have fared over time, and talks to present owners about how they care for them. Wonderfully illustrated, with interiors and gardens, this book is a ‘must-have’; a most welcome contribution to Hampstead history which will give hours of pleasure to anyone who, like me, loves looking at and reading about interesting houses.”

— *Helen Lawrence, former Chair, The Heath & Hampstead Society*

“What a delight. A timeless classic that every NW3 resident will want to own.”

— *Nicola Manasseh, Editor In the Square magazine*

“At the heart of this fascinating book are the author’s stunning photographs. NW3 at its most beautiful. And as David guides us systematically around the area, he introduces us not only to the houses, but the streets and neighbourhoods where they are located. We find out about the country estates that pre dated the housing, and why and when they were developed. And we see how they looked in previous centuries through a wonderful array of engravings, paintings and old photographs. And if you want to lift your spirits on a damp grey day, the bright sunshine and clear blue skies in David’s photos will surely provide the perfect tonic!”

— *Averil Nottage, former Chair, Belsize Residents’ Association, now The Belsize Society*

Coffee table Hardcover
320 pages
Full colour throughout
over 750 photographs
Available at Daunt Books
Haverstock Hill
and
Waterstones Hampstead
RRP £60

Heath Report

by John Beyer

We may be finally on the last stretch of the lengthy management restructuring which has affected Heath staff over a difficult 15 months. The Society has continued throughout this time to urge the City team to speed up the process, and treat those who daily protect the Heath in an equitable manner. We expect this to be completion by the end of May.

To follow the staff changes, the City has set up a number of reviews on the open spaces under its control. We will be involved wherever necessary to ensure the Heath remains protected and not exploited. We have been reassured that the “charities review” is unlikely to attempt to alter arrangements set up by statute (for example, the functioning of the Heath Consultative and Management Committees). It could be the review recommends that, in the long term, the Hampstead Heath Charity could establish more of an arm’s length relationship with the City. This could mean the Heath Charity would receive an annual grant from the City but be able to generate its own income which it could then retain.

The mid-term review of the City’s Ten-Year Strategy will be reviewed in the summer. The Society was heavily involved in the drafting of the original strategy and will remain engaged in the review this year.

New sightings

Adrian Brooker (Heath Ecologist) reports that, in the area below the Vale of Health, the Heath team have been coppicing the upper reaches of the Fleet stream (as part of a compartmental management plan), at one of the few sites in London where it flows in its natural state. Managing the tree cover can encourage species associated with wet woodland, such as wetland rove beetles, woodcock and water rail.



Hornet moth.
Photo courtesy: Adrian Brooker

spring started this year, a butterfly recorder found the eggs of another species not previously seen on the Heath. The brown hairstreak eggs have been seen near Parliament Hill and further north on the Extension. They are likely to be a newly establishing population. The larvae feed on Blackthorn.

Two new moth species were recorded on the Heath last year, the hornet moth and six-belted clearwing. The hornet moth is associated with poplar trees, and most of these are in the area of Hampstead No. 2 Pond. The six-belted clearwing was spotted by Heath Hand volunteers near Parliament Hill. As



Brown hairstreak moth eggs.
Photo courtesy Roban Harris

Camden nature corridors

The Society, on behalf of a consortium of local organisations and community groups, has presented to Camden Council’s 2024 Local Plan consultation a proposal for a biodiverse and accessible nature corridor in central Camden, leading from Hampstead Heath southward into Kentish Town. It will connect five Camden Sites of Interest for Nature



Conservation (SINCs) which lie along a habitat corridor identified in the 2021 Camden Policy Map. The Society proposed planned housing developments on three Camden Site Allocations, which lie along the Corridor's proposed path, Murphy's Yard, Regis Road and West Kentish Town Estates, provide the linking green infrastructure creating habitat "stepping stones" between SINCs, and allowing the rich biodiversity of the Heath to extend into residential areas, bringing more wildlife experiences, with their health benefits, into local green spaces. For more information about this proposal, please see the Society's website at www.heathandhampstead.org.uk/heath/society-proposes-nature-corridor-to-the-heath/

Events

This year, we will continue with our now regular events on the Heath. Kites on Kite Hill (Parliament Hill) will return again on Sunday 30 June (12 noon-4:00pm). Once again, this lively and colourful event will be organised in partnership with the City, the Kite Society of Great Britain and Heath Hands.

The Natural Aspect Summer Concert returns to the Parliament Hill bandstand on Sunday 21 July 1:00pm- 5:00pm. Bands from communities around the Heath will play. Among them will be John Etheridge and Vimala Lowe, who will sing their "Ode to the Heath", commissioned by the Society to mark the 30th anniversary of the City taking on the management of the Heath. Both this and the Kites Day are free of charge.

We plan to bring sheep again to the Heath in September (provisionally 6-16 September) to graze at the Heath Extension. We will be looking for volunteer shepherds and shepherdesses.

The Springett Lecture on Thursday 19 September at Rosslyn Hill Chapel will be given by writer and broadcaster Conor Jameson. We hope to see you for "Saving London's Birds, and other Adventures: Finding W. H. Hudson". Hudson was a founder member of the Bird Society, forerunner of the RSPB. He was a friend of artist Sir William Rothenstein, who lived in Hampstead from 1902 to 1912.

New member

We are delighted to welcome a new member to our Sub-Committee, Tereza Pultarova. Tereza is on the Heath daily and has a keen interest in ecological matters.

Heath Hands

Heath Hands runs a range of seasonal nature walks, nature mindfulness events and family drop-in nature activities on the Heath throughout the year. The programme is updated every month and summer activities will include walks on bats, pollinators and butterflies, as well as regular health walks and forest-bathing workshops.

To find out more, visit:

www.heath-hands.org.uk/whatson



Bird watching walk setting off



Delivering the Newsletter by email

Would you prefer to receive your Newsletter by email in the form of an Acrobat PDF file so that you can read it on screen?

It is environmentally more friendly, saving paper, unnecessary waste and cost.

With postage charges increasing, this is now a major consideration. The occasional extra flyers could also be sent via email, if wished.

PDFs of the Newsletter can be seen on the website. If you would like to try this, please let us know at:

info@HeathandHampstead.org.uk



Remember to use the Hampstead Card

The current list of businesses taking part in the scheme can be found on the Society's website and can be downloaded from there:

www.HeathandHampstead.org.uk

*Benefits offered are granted at the traders' discretion.
The Society is not responsible for changes in terms or
availability of any discounts or offers.*



KITE DISPLAY

AT PARLIAMENT HILL

Come and see members of The Kite Society of Great Britain give a spectacular display of the art of kite flying, with tricks and intricate routines accompanied by music, in the beautiful surroundings of the Heath

Sunday 30 June | Noon – 4 PM

Parliament Hill Fields



Supported by The Heath & Hampstead Society, The Kite Society of Great Britain, Heath Hands, and The City of London Corporation



FREE!

THE HEATH & HAMPSTEAD SOCIETY WITH THE
CITY OF LONDON CORPORATION PRESENTS:

NATURAL ASPECT



SUMMER CONCERT

SUNDAY 21 JULY

HEATH BANDSTAND 1 TILL 5

JOIN US FOR A LIVE CELEBRATION OF
LOCAL CULTURE TO FILL YOUR
SUMMER WITH JOY!

FEATURING:

BANGLA SHUR – BENGALI PLAYERS

JOHN ETHERIDGE & VIMALA ROWE – JAZZ & SOUL

THE SPUD PEELERS - IRISH, COUNTRY AND FOLK

THE ESTIMATORS – TRADITIONAL JAMAICAN SKA

AND LOCAL DJ DAN CARRIER



BRING A PICNIC - LICENSED CAFÉ -
ICE CREAMS - DANCING - ALL WELCOME!



The Heath & Hampstead Society presents
The 2024 Springett Lecture

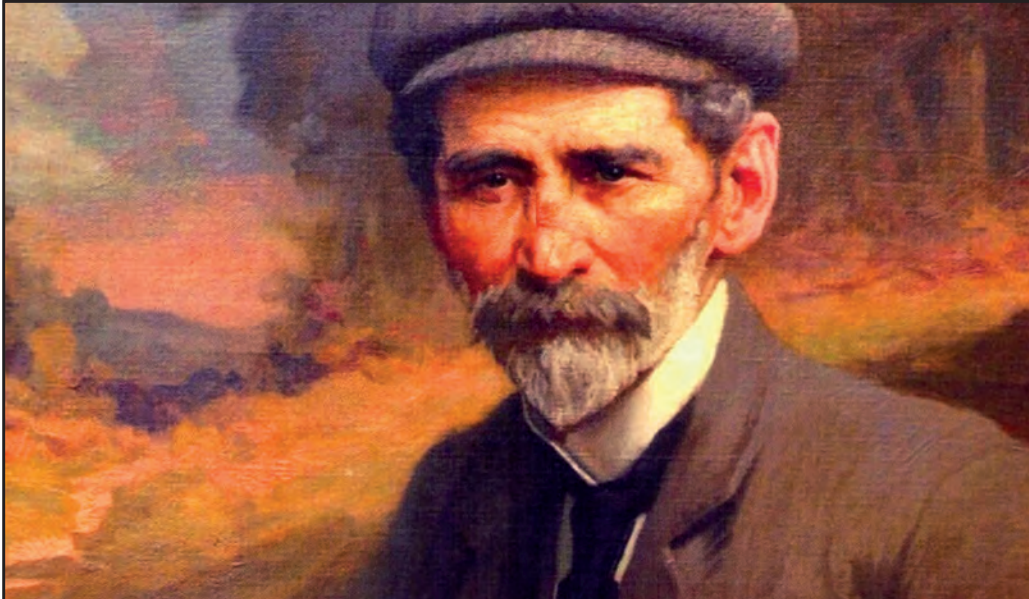
Saving London's Birds, and Other Adventures: Finding W. H. Hudson

A Lecture by Conor Jameson

Thursday 19 September
7:30pm for 8:00pm | Rosslyn Hill Chapel, NW3

Conservation pioneer and author W. H. Hudson came to London from Argentina in 1874, living here till his death in 1922. The talk describes his life in London as the only man supporting the women who founded the RSPB, and his struggle to overcome the odds of poverty and lack of formal education and establish himself as a figure of such renown that a monument and sanctuary to his memory was unveiled by Prime Minister Stanley Baldwin in 1925

This event is free to Society members. Tickets will be available for non-members at £15 via Eventbrite



Town Report

by Andrew Haslam-Jones

Rubbish

Regular readers will be familiar with the continual coverage of Hampstead's waste management problems in this column. Elsewhere in this Newsletter, our Society Chair reports the very informative public consultation held by Camden Council and Veolia UK, its waste disposal contractor, and which was attended by representatives of several residents group, local residents and both Hampstead Town councillors.

The Hampstead Transport Partnership

The Hampstead Transport Partnership, which was set up by our committee member Jessica Learmond-Criqui and comprises local resident groups, has now appointed consultants to prepare a strategic vision for transport in Hampstead. Phil Jones Associates have worked on similar projects before and, importantly, have an existing relationship with Camden Council. That should help both with their familiarity with Camden's way of working and with communicating the strategy to Camden once it is completed.

Members of the Society were invited, together with members of other local community groups and our councillors to a presentation given by two of the consultancy's associates. They demonstrated some of the work they have done elsewhere, such as in Ham and Petersham, and set out the timetable they will adopt in putting the strategy together. Their first step is to set up a series of meetings with local groups in order to gather information on what people's priorities are.

Camden Healthy Street Scheme

Not unrelated to what the Hampstead Transport Partnership is trying to achieve, that is an overall traffic management plan for Hampstead rather

than piecemeal traffic restrictions, we attended an online consultation that Camden held on its planned Healthy Street Scheme for Christchurch Hill and Well Walk/Flask Walk. The online meeting, requested by our councillor Stephen Stark, was extremely useful in understanding residents' specific objections to the planned changes. This, in turn, helped us to put together a submission on the consultation. For those interested, although the date for submissions has passed, the plans and consultation are still available to view online at: consultations.wearecamden.org/supporting-communities/safe-healthy-streets-consultation-christchurch/

While the intention behind many of the changes, to reduce traffic in Hampstead, especially on narrower roads, is welcome, several of the changes seem to go beyond what is needed and even make life difficult for local amenities and residents. For example, the changes proposed for the triangle outside the Well Walk Puppet Theatre and Burgh House, will not only endanger Burgh House's ability to raise funds from its use as a wedding venue but also create a likely hazard for pedestrians by possibly contributing to an increase in the speed of traffic descending at the top of Willow Road.

South End Road streatory

Readers passing through South End Green will have noticed the completion of the build-out of the pavement for the streatory in front of the parade of shops opposite the Heath on South End Road. Local residents campaigned to have the extra section paved with the characterful reclaimed York stone used in many places in Hampstead rather than somewhat less appealing concrete slabs Camden had originally intended to use. A local anonymous benefactor



Views of the build-out of the pavement with York stone on South End Road, already contributing to the comfort of pedestrians

provided the funds for the reclaimed York stone. The extension really augments the amenity for both pedestrians and restaurant/café-owners.

On the back of the support for the build-out of the pavement, Councillor Linda Chung has helped to set up a South End Greening Group of local residents and businesses to consult with Camden on the changes that are due to happen to South End Green with the pedestrianisation of the slip road where the No. 1 bus currently stops.

South End Green Flood Prevention Plan

The Society was recently asked to support a letter to Camden to ask it to address the now annual flooding problems in South End Green. However, it transpires Camden has a flood prevention plan. The next question local residents are pursuing is what is the plan and when any such plan might be implemented.

Plaques

The Plaque Committee, several of whose members sit on the Town Sub-Committee, continues its work of refurbishing older plaques and installing new ones. The plaque for Gerald Manley Hopkins in Oak Hill is to be refurbished and augmented with Florence Nightingale's name since they lived in the same house, though not at the same time. There is a plan to erect a plaque to Dr. Gerald Swire, the renowned endocrinologist who worked at the cutting edge of reproductive health, in Fitzjohn's Avenue or Prince Arthur Road, and another in Keats Grove to Eliza Acton, reputed to be the original food writer.

A plaque walk, where members of the Society and the public are taken round a number of the plaques erected to notable Hampstead residents by the Society, will be held on Saturday 18 May, and led by Juliet Sonabend and Carol Seigel. More details will be available on the Society website nearer the time.

Town Report (cont)

Spaniards Tollgate House

Committee member, Robert Linger, with the assistance of Councillor Chung, has overseen for the Society the refurbishment of the Tollgate House opposite the Spaniards pub. If any Society member knows anyone who would like to use the Tollgate House, please contact the Society using the email address mentioned above so that we can help with contacting Camden Council which owns the property.

New members

As you can see from this article, members of the Town Sub-Committee have been very busy. The summary above is neither comprehensive nor exhaustive. However, we are always keen to hear from members who would like to contribute to the sub-committee in some way. Please contact the Society at info@heathandhampstead.org.uk in the first instance if you would like to discuss whether this is something you might be interested in.

Potholes

The good news is Camden has at last resurfaced Willoughby Road whose moonscape was reported in the last Newsletter. There are, however, many other roads in Hampstead which could do with similar attention.



The smooth, resurfaced expanse of Willoughby Road, in contrast with its deeply pockmarked preincarnation that appeared in the last Newsletter



Image by vctecny

Members' email addresses

Are you missing out?

Keeping you informed of the latest news and events.

The Society is increasingly using email, to let members know of vital issues that crop up between Newsletters.

It is also an invaluable way to bring you other useful information, such as walks, talks and events that do not fit in with the Newsletter timetable.

If we do not have your email address you may be missing out on important local and Society news and initiatives.

So, if you have not already done so, please do send your email address to the Society at:

info@HeathandHampstead.org.uk

Make sure that you include your name and street address so that we can identify you.

This will also enable us to update our membership records and simplify our communications with you.

Planning Report

by David Castle

Camden Local Plan

One of the important documents which help control building and all development in Hampstead and around the Heath is the Camden Local Plan. In line with government policy, it must be revised and brought in line at regular periods.

Last year, the Society commented in detail on Camden's first draft of the revised Local Plan and has last month sent further comments on the final draft.

The Planning Sub-Committee is concerned with ensuring any change in the Local Plan benefits and does not reduce or threaten:

- the openness of the Heath;
- the buildings and public spaces of Hampstead;
- the gardens, particularly those on the edge of the Heath; and
- the ecology, biodiversity and trees of the area.

We also need a Local Plan which increases local participation and influence on local planning decisions.

After much discussion, the Society decided several issues were not adequately dealt with and needed improvement as follows:

1. Increased protection of gardens

Over the last years, so many gardens have been lost to large, permanent buildings with concrete floors and foundations and also with related and increased hard-paving. This results in drastically increased water run-off, reduced top-soil areas in gardens and hence reduced biodiversity.

The latest draft Local Plan does not take the opportunity to drastically reduce the amount of building that can take place in each garden.

For instance, the use of the word "excessive" in Section 11 is too open to subjective interpretation.

Instead, the Society suggested the word "disproportionate" be used, together with a clause encouraging the use of

lightweight materials for garden buildings of a small size which would maximise the retention of large areas of top-soil in each garden.

2. Gardens on or close to the edge of the Heath

The importance of reducing the amount of building in all gardens around the Heath is even more important as the biodiversity of the Heath needs to be supported by the network of gardens which surrounds it.

Furthermore, the openness of the Heath, of which we are pleased to see much mention in the draft, is threatened by all buildings in gardens close to the Heath.

3. Tall buildings seen from the Heath

Unfortunately, the large area for development at Murphy's Yard and other nearby areas have been designated as potentially suitable for tall buildings. These would clearly be seen from the southern parts of the Heath and would compromise its openness.

The Society strongly objected to high buildings which are close to and would clearly be seen from the Heath. Furthermore, the Society queried the findings of the Camden Building Heights Study which justifies tall buildings close to the Heath.

Heath House (opposite Jack Straw's Castle)

This historic listed building has now received final permission for a large extension and total refurbishment. The starting date now can only be decided by the building owner.

Residential block at Archway

Finally, the very tall proposed 33-storey residential tower block at Archway, clearly visible from the Heath, has not yet been submitted to Islington Council for planning permission. We have been informed Islington planners are currently supporting the tower. Of course, the Society will object.



Less congestion and air pollution in Hampstead

by Jessica Learmond-Criqui

In 2021, the Hampstead Transport Partnership sent a survey to residents to capture their views on improving the environment and safety of Hampstead's streets. This survey was the result of a collaboration between many community groups in Hampstead which was determined to end the conflict and chaos bedevilling transport policy in the area for decades. This report by HTP's co-ordinator highlights the ongoing work of the Partnership and the next steps.

The Hampstead Transport Partnership ("HTP") is apolitical and non-partisan and was created by representatives of local groups: the Society, Redington and Frognal ("RedFrog") Neighbourhood Forum, and local councillors for Hampstead Town and Frognal wards. Since 2019, the HTP has been working with transport experts and local politicians to produce a "joined-up" strategy, building on similar

Less congestion and air pollution in Hampstead (cont)

neighbourhood plans for land use in the Hampstead Town and RedFrog areas. The survey was the first element in reaching these goals.

Whether blocking the school run, closing off roads or allowing rat-runs, transport in Hampstead Town and Red-Frog area causes as much hot air and exasperation as hot exhaust fumes. HTP believes fractious debate can be avoided if the community creates an overarching transport strategy protecting the rights of residents, promoting joined-up thinking, improving air quality and making Hampstead Town and Froggnal wards more pleasant to live in and move around.

The first stage in the process launched in June 2021 with an online survey was designed to capture the priorities of local people. The survey had a positive response with 469 replies and over 700 individual comments and suggestions. The results of the survey can be found at [we.tl/t-kNA5UXTHO9](https://www.camden.gov.uk/transport/consultation/2021/06/21/hampstead-transport-survey). These are partial results as the 700+ comments will be synthesized later and an updated report published.

The HTP applied for Community Investment Levy (CIL) funds to enable it to instruct consultants who would assist in delivering, among other things, community engagement. Camden Council approved the application and released the funding. HTP then approached five consultant firms to provide the support required and ultimately appointed PJA.

What's next

The survey results will be followed by a variety of consultation meetings with residents and other key stakeholders (including Camden Council, business associations, parents' organisations and other local groups). The output from these meetings will be used to fashion a much-needed global Transport Design Charter setting out principles for transport in the area.

The HTP hopes to deliver a strategy in the form of a community-led Neighbourhood Transport Charter. Its inspiration is the charter prepared for Dartmouth Park in 2021 by transport specialists, Urban Movement, with support from Camden councillors Adam Harrison and Sian Berry, and with CIL funding. That charter built a neighbourhood transport strategy for the Dartmouth Park area.

The Dartmouth process was community-led, with Urban Movement working in an enabling role, facilitating a comprehensive process of community engagement, bringing evidence to bear to assist the community to make decisions and synthesising the results into a documented neighbourhood strategy.

HTP envisions the resulting neighbourhood transport strategy for Hampstead and Froggnal to be prepared by PJA will not aim to define specific schemes. Instead, it will set out a community-led framework to help shape and prioritise future schemes for the area.

Like Neighbourhood Plans guide the application of the Local Plan on matters of land use, the HTP expects the transport strategy will assist with implementation of the Camden Transport Strategy, guiding improvements to public transport, public realm and sustainable transport infrastructure in the Hampstead Town and RedFrog areas. The strategy will deliver a holistic vision for transport in the neighbourhood, through principles which are community-led, evidence-based and locally informed, recognising the desire of all communities across the borough to play a greater role in influencing the decisions which affect them. By guiding officer decisions on future transport projects, it will save time and money by giving planners greater reassurance that new schemes will find a favourable reception from the community.

Less congestion and air pollution in Hampstead (cont)

Community engagement

On the basis of initial discussions between HTP and PJA, the next steps will be a substantial, second phase of community engagement, which will produce the neighbourhood transport strategy. The tentative dates for the community engagement are

<i>St Stephens Church Hall, Pond Street, Belsize Park NW3 2PP</i>	
<i>7-10pm, doors at 6.30pm</i>	
<i>In person</i>	<i>Online</i>
<i>7 May</i>	<i>8 May</i>
<i>Feedback sessions</i>	
<i>2 July</i>	<i>3 July</i>

PJA will also have discussions with stakeholders and with Camden Council to bring together the concerns and issues emerging from the initial phase into a set of coherent, community-led strategies and priorities. PJA will help to synthesise the community's views, capture supporting evidence to inform judgements and point towards possible next steps once community priorities and red lines have been established. The output of this work will be the final transport neighbourhood strategy along with a report.

HTP is excited to have the community and PJA along for this journey.

The school run problem

by Adam Harrison

This piece by Councillor Adam Harrison, Councillor for Bloomsbury Ward, Deputy Leader, London Borough of Camden, and Cabinet member for a sustainable Camden, is an overview of the current traffic problems we face in Hampstead and surrounds and what is being done to reduce their impact on children and residents.

I am writing this in the week of the Easter holidays, when the roads of Camden are noticeably quieter in the mornings and afternoons – because of the absence of the school run.

This, is of course, not just a problem facing our borough. But it does have particular resonance in places such as Hampstead, with its very high concentration of independent schools alongside state schools. Large – or effectively no – catchment

areas for the former can add to the issue, with the ramifications being felt not just in Hampstead but also in neighbouring areas as parents drive their children to school through Camden, Barnet and Brent. This is an issue that regularly comes up in my conversations with residents and organisations in the Hampstead area.

The tools available to address this are relatively few but some do exist. For a number of years, schools have been able to take part in the Mayor of London's Travel for Life programme (formerly known as STARS), through which they can gain bronze, silver, or gold accreditation as they work with families to help children travel to school in different ways, whether it is walking, cycling, or using public transport. This programme is open to all types of school and take-up

The School Run Problem (cont)

among the independent sector has been good.

Another tool is the Healthy School Street, which are timed closures of the street by a school around drop-off and pick-up times. These free up the space by the school gates for families to bring their children in, improving road safety by reducing opportunity for collisions between large numbers of pedestrians and drivers moving around in close proximity. Camden was the first borough in the country to introduce a Healthy School Street, at St Joseph's Primary, and we now have schemes in place covering more than 30 schools.

When trialling these changes, we speak to children directly about their experiences. Pupils attending Southbank International School on Netherhall Gardens told us about their experiences before and after the trial of the large zone in that area covering five schools in one go. Their recollections before the trial included, "a lot of gas came out of the cars and into the school", and "it took a long time to cross the road", while after they said, it was "much more healthy and it's good for us." Too often the views of children get overlooked or are never even canvassed when public authorities make decisions – we need to do more of this.

The reductions in traffic outside the school gates can be significant. The fourth Healthy School Street we brought in within the borough was at New End, where we found that traffic fell 59 per cent in the restricted area during the morning peak, providing big safety and air quality benefits. Naturally, residents within the zone are still able to use any vehicles they own as usual but we are grateful to all residents in all schemes for their cooperation in helping make these changes work.

Hampstead is also the home of the brilliant charity Green School Runs, who work with families and

schools precisely to promote new ways of getting to school (greenschoolruns.org). They are run by local parents and have drawn up a guide to sustainable travel to schools in NW3. And more local parents are making changes all the time – in March, the first Camden Bike Bus took place, with a group of parents cycling their children from Chalk Farm to Belsize Lane.

We also want to invest in widening the pavements and improving the spaces outside schools. During the pandemic, we created new space outside Christ Church and Fleet Primary Schools, creating more space for children and parents to walk and wait, and we wish to bring such investment to other schools in the area too, including new tree planting and greening.

There will be a long way to go to further reduce the heavy impact of the school run. But we will get there through the work schools do on travel with pupils, the investment brought by local authorities to encourage other forms of travel, and the much-needed energy brought by charities and parents themselves. Many Hampstead residents have told me they would like to see more concerted progress on this issue which affects them so much. I look forward to working with people in NW3 to bring the safer, less polluted streets the area deserves.



Holly Bush Vale Healthy School Street, covering UCS Junior and Hampstead Parochial Schools. Photo courtesy: Camden Council

Notes from the “Rubbish Conversation” held on 16 October 2023 at Keats Community Library

by Marc Hutchinson

What follows is an outline note of the Conversation hosted by the Society to discuss the widely held concerns of residents in relation to commercial and domestic rubbish collection in Hampstead. The Society is grateful to Camden officers and Veolia for their attendance and candid participation.

Present: Rachel Bailey (Camden Head of Environment Services), Tim Gray (Environmental Services, Borough Monitoring Manager), Nicholas Hearn (Veolia Collections Contract Manager) and Manjola Lorenci (Senior Education and Enforcement Officer).

Also present: Ward Councillors Linda Chung and Stephen Stark, and representatives of local amenity groups and residents' associations.

In the chair: Maddy Raman (Trustee of the Society).

The legal regime governing the collection of commercial waste is different from that governing the collection of domestic waste.

Commercial waste

The key legislative enforcement provision regulating the collection of commercial waste is section 47(2) of the Environmental Protection Act 1990 (“EPA”): “If it appears to a waste collection authority that there is likely to be situated, on any premises in its area, commercial waste or industrial waste of a kind which, if the waste is not stored in receptacles of a particular kind, is likely to cause a nuisance or to be detrimental to the amenities of the locality, the authority may, by notice served on him, require the occupier of the premises to provide at the premises receptacles for the storage of such waste of a kind and number specified.”

Camden, as the collection authority, can give detailed instructions, in a notice, about the receptacles to be used, and when and where they are to be placed for the purposes of collection etc. Failure to comply with a notice is an offence.

The enforcement process is typically as follows: Camden issues the notice; the recipient of the notice can challenge

it; if the notice is not appealed or the challenge is unsuccessful and the notice is not complied with, Camden can issue a Fixed Penalty Notice (“FPN”) under section 33ZA EPA.

Since 2012, a “time-banding” regime has been applied to commercial waste in Hampstead High Street, but not as yet at South End Green. This requires that commercial waste can only be lawfully put out within 30 minutes before the scheduled collection times; outside the time-banded window, waste must be kept on the premises. For collections by Veolia (see below), the permitted window is 30 minutes before the scheduled collection times: 06:00-08:00, 18:00-20:00 and 24:00-02:00. At South End Green, there are two daily non-time-banded Veolia collections.

All commercial outlets must have a contracted waste collector, and Camden checks the outlets to seek to ensure this.

Camden faces several difficulties in controlling commercial waste collection and disposal so far as it affects the public realm. The main problem is that, under the relevant parliamentary legislation introduced by the present government with the intention of introducing competition into the waste collection market (and so, in theory,

Notes from the “Rubbish Conversation” held on 16 October 2023 at Keats Community Library (cont)

denying Veolia a potential local monopoly), commercial outlets (shops and restaurants) can, and most do, engage their own waste collector which provides a less reliable and less frequent service than Veolia. These independent waste collectors are not directly answerable to Camden. Sometimes the choice of waste collector follows from the decision of the shop chain to engage a waste collector nationwide. Until this law is changed, there is nothing that Camden can do to compel shopkeepers to use the reliable and frequent services of Veolia; all Camden can lawfully do is to draw attention to the Veolia service. Nevertheless, Camden does issue guidance to shops from time to time, sometimes generally and sometimes individually, if the shop's rubbish is causing a nuisance.

Other difficulties which Camden faces include educating and urging commercial outlets to avoid leaving waste out at the wrong times and in the wrong places. The (agency) staff at the outlets are constantly changing, and there is often no one in apparent overall charge of management of the premises. There are even some outlets who appear, in disregard of their legal obligation, not to have engaged a waste collector. These outlets in effect fly-tip their rubbish and remove their names and logos from the waste bags so that they cannot be identified. Camden staff nevertheless investigate unlabelled bags to try and find the culprit.

It has for the time being been decided, interested parties having seriously looked at this proposal, that large, fixed collection boxes (as in many European cities) would unduly clutter Hampstead's narrow pavements, could not be effectively locked, and would probably only attract more casual rubbish from pedestrians and rogue shops. The Society, and ward councillors, hope this possibility, despite the logistical challenges, is still worth exploring.

Sanctions

Camden believes that FPNs are the most effective sanction under the existing law. Criminal proceedings in the magistrates' courts are rarely brought by London boroughs

for several reasons.

The criminal charge has to be proved beyond reasonable doubt and any weakness in the prosecution's case, in particular on the

evidentiary point (often circumstantial) of the connection between the defendant and the photo of the pile of rubbish, leads to an acquittal, sometimes merely off the back of the mere protestation (“how can I prove a negative?”) of the defendant that it was not responsible for the rubbish. Even if convicted, the courts tend to show extreme leniency in the imposition of fines. Thus, the ultimate and proper sanction for what is serious anti-social and criminal behaviour is, in practice, lacking under the existing legal system.

Receptacles

The problem of foxes and seagulls and other vermin getting at bags of waste left on the pavement is well known. Camden is looking at requiring the use of bags which are more resistant to this predation. Camden is also trialling fixed street container-receptacles for domestic waste.

Domestic waste

The key legislative enforcement provision regulating the collection of domestic waste is section 34(2A) EPA: “It shall be the duty of the occupier of any domestic property in England to take all such measures available to him as are reasonable in the circumstances to secure that any transfer by him of household waste produced on the property is only to an authorised person or to a person for authorised transport purposes.”

As with commercial waste, Camden can issue a notice under section 34 EPA alerting the householder to a breach of this duty. Failure to comply with the notice can entail the issue of a FPN.



Notes from the “Rubbish Conversation” held on 16 October 2023 at Keats Community Library (cont)

All domestic waste in Hampstead is collected by Veolia. Although it has the power to enforce the use of particular receptacles under section 46(1) EPA, Camden prefers to engage with householders in persuading them to use appropriate receptacles and to put their rubbish out at the appropriate times. Although, as a general proposition, secure bins are preferable to bags, many Hampstead residents live in small apartments which cannot accommodate the bins and therefore, by default, have to use bags. However, if your neighbour insists on using bags when they could be using a bin, you should raise the matter with Camden who will then speak to the neighbour.

Householders who live above shops use Veolia (not the shop's collection company) and, if they are in the Hampstead time-banded area, can put their rubbish out not more than 30 minutes before the three scheduled daily time-bands.

The particular problem of food waste caddies which can be opened by foxes, is being looked at with a trial of a new fox-proof caddy.

Householders are not entitled to leave their bins generally out in the street, and should only put their bins out no earlier than the day before the scheduled time for collection by Veolia and no later than 7.00am on the collection day.

Bagging

Camden's overarching policy is that there should be no black or unbranded or unidentifiable bags of rubbish left out on the pavement. Any such bags are automatically collected by Veolia. For example, residents who live above shops are given branded bags by Camden: clear for recycling, orange for general waste. Shops which use Veolia use purple bags. Shops which do not use Veolia must use the branded bag of their collection company. The intention is that Camden officers should always be able at a glance to identify the category of bagged rubbish on the pavement and, in the case of the rubbish from the latter class of shops, the name of the collection company.

Veolia

Veolia does its best to run an efficient collection service. If the service does not arrive on time, this is usually the result of road closures, the school run and other *force majeure* factors. Changes to collection times are notified via Camden's website. Staff are meant to collect up waste which has been accidentally spilled as bins and bags are collected, and are meant to put bins back in their original place. The behaviour of crews is periodically monitored but, like many businesses in the post-pandemic world, Veolia suffers a shortage of HGV drivers and a higher turnover of staff.

Contrary to popular perception, street-sweeping is not always scheduled to occur immediately after bin collection.

Enforcement

Between 2022-2023, Camden issued 168 notices and FPNs, the majority of notices in South End Road and the majority of FPNs in Hampstead High Street.

Leaves

Leaves are meant to be collected as part of general street-sweeping. However, there is a special service available for the removal of large amounts of leaves in the autumn: visit the Camden website at "Report leaf fall":

<https://www.camden.gov.uk/report-leaf-fall>

or contact Veolia by phone or email: 020 3567 8105; email uk.occamden@veolia.com.

Fly-tipping

The Love Clean Streets app (downloaded to a smartphone from Google) can be used to report street cleaning issues such as illegally dumped rubbish, dog mess, graffiti and litter; Alternatively, the report can be made via the Love Clean Streets web page or by calling or emailing Veolia (see above).





WHAT'S ON AT
HAMPSTEAD THEATRE

MAIN STAGE



BETWEEN RIVERSIDE AND CRAZY

BY STEPHEN ADLY GUIRGIS
DIRECTED BY MICHAEL LONGHURST
3 MAY - 15 JUN



VISIT FROM AN UNKNOWN WOMAN

BY CHRISTOPHER HAMPTON
BASED ON THE SHORT STORY BY STEFAN ZWEIG
DIRECTED BY CHELSEA WALKER
21 JUN - 27 JUL

DOWNSTAIRS



THE HARMONY TEST

BY RICHARD MOLLOY
DIRECTED BY ALICE HAMILTON
17 MAY - 22 JUN



GRUD

BY SARAH POWER
DIRECTED BY JAZ WOODCOCK-STEWART
28 JUN - 3 AUG

BOOK NOW - TICKETS FROM JUST £10
HAMPSTEADTHEATRE.COM

Eton Avenue, Swiss Cottage, London NW3 3EU

SUPPORT YOUR LOCAL THEATRE

Become a Friend of Hampstead Theatre

Join as a Friend to make sure you never miss a show and support the future of Hampstead.

From £60 per year Friends receive exciting benefits such as:

- Priority Booking
- Regular e-newsletters
- Invitations to exclusive events at the Theatre
- 10% discount at Hampstead Theatre Café and more.

JOIN NOW ON:

hampsteadtheatre.com/friends

Call us on **020 7722 9301**

or visit us on Eton Avenue, NW3



WE LOOK FORWARD TO
WELCOMING YOU SOON!



HAMPSTEAD SUMMER FESTIVAL

HAMPSTEAD, GET READY TO PARTY!

THE SUMMER FESTIVAL IS HERE!

Hampstead's Art Street 20th June to 14th July

Come and see the colourful canvas murals along the walls of Keats Grove, painted by local artists and schools. Take a selfie!

*Art Fair in Keats House Garden** Sunday 23rd June 2-5pm

Art Marquees (displays of art for sale & Picture the Heath competition winners), art activity table, food and wine, designer craft stalls. *Free admission*

*Much Ado About Nothing** Thursday 27 & Friday 28th June

Open-air evening performances at 7pm, and **Saturday 29th June:** matinee 2pm, evening performance 6pm in Keats House Garden*. Bring a picnic, refreshments available on site. Tickets £25/£20 concessions /£78 for family of two adults and two children. Book at www.eventbrite.co.uk



*Family Garden Party in Keats House Garden** Sunday 30th June 2-5pm

Rhyme-time, magic tricks, birds of prey, ballet class and performance, art activity table, Mystical Fairies, face painting, giant chess set, wine bar, tea, cake. *Free admission*

BIG FAIR in HEATH STREET Sunday 7th July 12-5pm

Over 100 stalls of high-quality crafts, fabulous food and drink, fun fair, kids' circus school, a stage for rocking bands to get everyone dancing in the street. *Free admission*



*Keats House and Keats Community Library, 10 Keats Grove, NW3 2RR

Please check our website www.hampsteadsummerfestival.com for latest information and ticket links.

*The Hampstead Summer Festival committee is delighted that all proceeds will go to two popular and vital local charities:
Hampstead School of Art and Keats Community Library.*

Keats Community Library and Keats House,
Keats Grove, NW3 2RR



Thanks to our sponsors



Hampstead
School of Art





by Kate Webster

The 2024 season of Proms at St Jude's takes place in and around the iconic settings of the Lutyens-designed Central Square at the heart of Hampstead Garden Suburb from Saturday 22 June to Sunday 30 June, with multiple events every day.

Our extensive programme of **Heritage Walks** ventures to Highgate Woods (for geology) and the Heath (conservation management), whilst forays into central London include Kings Cross, as well as *Revoluting London* which exploring 2000 years of 'rebellion and retribution'. On the final weekend there are two morning walks in Hampstead; on 29 June we will be exploring the hidden corners of old Hampstead, whilst on 30 June prize-winning author/guide Rachel Kolsky will lead a walk southwards looking at some of Hampstead's past famous residents. Many of our walks are in the Suburb – both one of London's best kept secrets *and* a mecca for architects and planners from across the world. Architectural writer Nikolaus Pevsner described Hampstead Garden Suburb as "the most nearly perfect example of that English invention and speciality, the garden suburb". One of the walks will focus on Pevsner and his contribution to safeguarding the HGS conservation area, whilst others will look at the origins of the Suburb, particularly how Henrietta Barnett's experiences in the East End shaped her vision of the Suburb, whilst others will focus on individual architects, the historic trees in the landscape and homes for working women. All walks must be pre-booked via the Proms website.

Once again, Proms brings world class **music** and musicians to the renowned acoustic of St Jude-on-the-Hill. Top-drawer names include the Kanneh Masons and Friends, and one of the 2023 BBC Proms sensations, renowned horn player Felix Klieser, who appears in *Mostly Mozart* with Echo Ensemble. Meanwhile, Rainer Hersch and his Orkestra will bring down the curtain on the festival in *Last Night ... As Never Before*. Lighter evenings include the London Tango Orchestra, a Tribute to Motown from Wayne Hernandez and his Band, and Liza Pullman and Joe Stilgoe who will grace the stage as *A Couple of Swells*. As usual, the first festival weekend (22-23 June) brings **LitFest** in The Henrietta Barnett School. Headline authors include Sathnam Sanghera, David Kynaston and Robert Hardman; by the time you read this, the full listings of authors and interviewers will be on the festival website.

There is also a range of musical offerings for **children, families and schools** during the week, culminating in our Family Festival which debuted in 2023 on and around Central Square with a mix of free and ticketed events.

Proms at St Jude's has a deserved reputation for the quality of its events, but is also proud to raise funds for Toynbee Hall and the North London Hospice. Proms at Jude's could be a highlight of your summer; please come and join us – we have something for everyone and will make you very welcome! Full details of all events are on our website www.promsatstjudes.org.uk

Upcoming Events at St John's Downshire Hill

29 June 10:30–16:30
Art exhibition

St John's Downshire Hill is home to a number of talented artists. Come and browse a variety of styles and media – oils and pastels, watercolours and mixed media, photography and pastels. Some work is for display only and others are for sale (both originals and prints). There will also be the opportunity to enjoy our Grade I listed building, with its excellent natural light. Refreshments, including home-made cakes, will be available.

Entrance free



29 September 18:00
The Roots of Jazz

Tickets £10 per person available from
www.sjdh.org/roots

The Roots of Jazz is a touring event performed by professional jazz musicians. The evening features live music and a talk exploring the intertwining stories of the roots of Jazz and the Christian faith. St John's Downshire Hill is a popular venue for concerts in Hampstead and this evening will see the building arranged in a jazz café style with wine and soft drinks available to enjoy.

St John's Church, Downshire Hill, Hampstead NW3 1NU
www.sjdh.org

Our regular Sunday services are at 10:30am and 6:00pm
on Sundays, and all are welcome





Spring, Summer and Autumn Musical Events

St John-at-Hampstead Parish Church, Church Row NW3

Sunday 7th July, 5.00 pm

Symphony Evensong

Oh sing unto the Lord
Henry Purcell

The Hampstead Collective

3 June, 7.00 pm

Western Wind, when wilt thou blow?

Mass *The Western Wind* by
John Taverner, with motets by
Thomas Tallis
Directed by Geoffrey Webber

8 July, 7.00 pm

Opera Gala

Favourite arias and ensembles from
operas by Mozart, Puccini, Strauss,
Verdi and more. Sung by Rebecca
Hardwick, Catherine Backhouse
and Aidan Coburn

12 August, 7.00 pm

In the Sky

Messiaen, Harawi and Chants de
Terre et de Ciel
Stockhausen, *In the Sky I am walking*
Soprano: Rebecca Hardwick
Tenor: George Chambers
Piano: Charlie Newsome-Hubbard

Ticket information available at www.thehampsteadcollective.com/concerts

Young artists organ recitals

25 May 4.00 pm

Music by Buxtehude,
Alain and Dupré

22 June 4.00 pm

Programme to be confirmed

20 July 4.00 pm

Programme to be confirmed

All enquiries to Jenny Macdonald-Hay 0207 794 1193



Maggie's Royal Free by Studio Libeskind. Photo courtesy: Hufion

Maggie's Royal Free – providing free cancer support in North London

by Helen Muir, Centre Fundraising Manager

Maggie's has more than 25 years of experience providing expert care and support in their 24 centres across the UK. Built on the grounds of the NHS hospitals, their centres are warm, welcoming and designed to provide a breathing space away from the hospital. There you can get practical advice, meet others who understand or find someone to just listen.



Maggie's Royal Free by Studio Libeskind. Photo Credit Hufion Crow

Maggie's Royal Free, the newest of the 24 centres, is based in the grounds of the Royal Free Hospital and opened in January 2024. Maggie's is here for anyone with cancer and their family and friends, whatever kind of cancer, whatever stage.

Their cancer support specialists, psychologist and debt and benefits advisor have expert knowledge about cancer and treatment, stress, depression, managing side-effects and money worries. They also have qualified Yoga, Qigong, Nordic Walking and gentle exercise instructors who run groups to help with energy levels, mood, sleep and confidence.

When cancer turns your life upside down, Maggie's support can help you take control again. Their centre is open Monday to Friday, 9am–5pm; you do not need an appointment or referral and all their support is free. The centre can be found by following the Maggie's

Maggie's Royal Free – providing free cancer support in North London (cont)

signs in the Royal Free Hospital or by walking down Rowland Hill Street.

The centre is beautifully designed by Daniel Libeskind, founder and principal architect of Studio Libeskind. The centre contrasts with the hospital surroundings; whilst the footprint of the ground floor is small, the building cleverly extends as it rises – making good use of the space. There are exterior folds and curves that create a calm and peaceful interior space offering privacy, light and shade. The centre is nestled into a planted garden designed by Martha Schwartz Partners providing visitors with an outdoor space to relax in when the sun is out. The design uses trees from the existing woodland to provide an intimate and soothing outdoor space.

Here the centre has been designed to contrast with its hospital surroundings, drawing people in with an approachable and welcoming timber form. The exterior's curves create a calm and peaceful interior offering privacy in a light-filled space. Inside the centre, spaces flow freely from one area to the next. Some areas have been designed to enable moments of quiet and repose when needed in more private spaces such

as the library. Other spaces purposefully encourage talking and socialisation, like the kitchen.

For people with cancer, there is no template for their experience. The journey is an emotional, painful, and uncertain one. The design for this centre aims to address this by recognising the individual in the architectural space. The rooms and spaces encourage interaction, contact, and discovery, while also allowing for private and meditative spaces for rest. The building is completely handcrafted—we used both traditional and innovative systems to realise the design.

“My hope for this centre is that it embraces the people who enter it and addresses their needs. The building communicates the story of the visionary woman whose life and philanthropy touched so many, along with her husband Charles Jenks, who was an instrumental force in the architectural ambition of Maggie’s” – Daniel Libeskind

Maggie's are a charity funded by the kindness of their donors, fundraising and gifts in wills. Maggie's has never been more needed, and they need your help so they can continue to provide support for more people living with cancer.



Maggie's Royal Free by Studio Libeskind. Photo Credit Hufion Crow



Maggie's Royal Free by Studio Libeskind. Photo Credit Hufion Crow

Lifecycle: a new visual project for Highgate Cemetery and Whittington housing estate

by Emilia A. Leese

Award-winning photographer, Matthew Maran, has embarked on an ambitious documentary project on the entanglement of Nature in all its expressions using Highgate Cemetery and Whittington estate as the backdrop. The following is mix of original words and an edited version of materials written by the creative team behind the film. All photos in this piece are courtesy of Matthew Maran.

Lifecycle is an ambitious new creative documentary project spearheaded by Matthew Maran. The documentary is being filmed in Highgate Cemetery and on the Whittington estate. *Lifecycle* is a meditative documentary determined to shift our worldview, to remind us we are Nature, an affirmation of the wonder of what it means to be alive.

You will be familiar with Matthew Maran's name and work. The Newsletter often features his work, as does *The Guardian*, *Wildlife Photographer of the Year*, *BBC Wildlife Magazine* and *National Geographic*. He is also the judge of the Society's photo contest and is the founder of Hemisphere Publishing. Matt has been granted exclusive all-areas access to film and photograph Highgate Cemetery and we were fortunate enough to walk with him on a crisp winter morning and hear all about the project. We had a



Highgate Cemetery



Foxes make their home in Highgate Cemetery

wonderful fox encounter too.

Matt and the *Lifecycle* team see Highgate Cemetery as bringing all of us face to face with the reality we don't just return to Nature. We are Nature. It's a unique place where people escape their virtual bubbles to reconnect with the real and the visceral. There is no self without the other.

The outbreath of a plant becomes the inbreath of an animal. The fox relies on human-made medicine for their survival. The tawny owl hunts mice among the gravestones. The gravedigger needs the mycelium binding the soil and gardeners remove discarded empty plastic water bottles made in China.

Meanwhile, the surgeon tends to the oak tree, ridding it of blight. The rare orb-weaving spider births in the dark damp corners of a mausoleum hundreds of years old, and the cemetery managers research how best to protect the site from the impacts of climate change whilst a bird, having just returned from wintering in Africa, lands on the world-famous gravestone of Karl Marx.

These relationships play out against a backdrop of life on the other side of the cemetery walls. In the iconic modernist Whittington Estate bordering Highgate Cemetery, kids skateboard the concrete

Lifecycle: a new visual project for Highgate Cemetery and Whittington housing estate (cont)

thoroughfares that were designed in the 1970s golden age of progressive social housing. Parents argue due to the stresses of today's cost of living crisis. Newborns are pushed along in prams. A carer visits an elderly woman with cancer. Birthdays are celebrated and teens practise their latest *TikTok* moves driven by the algorithm. The sound of the news lamenting the state of the world is carried through the air and tenants argue with the local council about their broken heating system.

By documenting the lives and goings in the two settings, two narrative arcs develop and intertwine over the course of the year. And that entanglement itself is a nod to Gaia ecosystem theories. Life is entangled and symbiotic, represented by the ivy growing on the wall bordering between the cemetery and housing estate, which itself represents a border between the dead and the living. The cemetery is a rare place because it feels rooted and permanent in a city that is in constant flux. It is full of stories – human and more than human – stories re-orientating and helping us rediscover kinships with other beings.

Lifecycle is an invitation to reclaim our humanity during increasingly inhuman times of crises.

In their work, Matt and the creative team are using LiDAR image scanning, microscopic cameras and specialist microphones to uncover layers of life from



The rare orb-weaving spider



Inside the mausoleum

the depths of the soil to the heights of the tree canopy, all invisible to the naked eye and beyond normal human perception. Their ambition is to work with Nick Cave on the music composition, and Helena Bonham Carter on the poetic narration, to be written by Jay Griffiths.

In addition to Matt, the creative team includes: Marc Silver, award-winning film and documentary maker; Chris Packham, the renowned conservationist and television presenter; award-winning producer Kat Mansoor; Emiliano Battista, award-winning film editor; and their artistic partner Marshmallow Laser Feast, an experiential art collective working at the intersection of ecology, technology and new media art.

Since the spring of 2021, Matt and the creative team have dedicated themselves to the project. They have amassed a substantial collection of visual content and fostered crucial connections with individuals affiliated with or working directly at the cemetery. Presently, they are in pursuit of funding to produce a compelling five minute reel, essential for unlocking additional funds necessary for the creation of a feature-length documentary.

For more details or to donate to the project please contact Matt on 07812 131 721 and matt@matthewmaran.com

Burgh House & Hampstead Museum

Marie-Louise von Motesiczky:

(in)Visible Women

until 15 December 2024

Motesiczky's vibrant expressionist paintings give presence to the rich everyday lives of women as friends, lovers, carers, at work, and at leisure. Poignant, witty, and sometimes unsettling, these works range from the literal everyday to fantastical explorations of inner feelings

Please visit our website to find a range of specially programmed events to accompany the exhibition, including a curator's tour; a family sketching workshop; life drawing; and a talk by art historian Ines Schlenker

Studio with Nude Model.

*Photo courtesy: Marie-Louise von Motesiczky
Charitable Trust*



Burgh House
New End Square, NW3 1LT
☎ 020 7431 0144
info@burghhouse.org.uk
www.burghhouse.org.uk
@burghhouse1704

**BURGH
HOUSE**

House & Museum: Open Wed, Thu, Fri, Sun & Bank Hols 10am-4pm
Café: Open Wed, Thu & Fri 10am-5pm; Sat, Sun & Bank Hols 9:30am-5:30pm

Camden Art Centre
Arkwright Road
London NW3

Matthew Krishanu
The Bough Breaks
until 23 June

Matthew Krishanu (b.1980, Bradford, UK) paints atmospheric, pared-back compositions including scenes from the artist's life, particularly his childhood years in Bangladesh growing up with his brother, and their parents who were Christian missionaries. In the paintings, seemingly familiar narratives are alluded to but destabilised. The viewer's own projections are called upon to fulfil the interpretive loop, raising questions about childhood, religion, race, power, and the legacies of empire

Banyan (Boy), Matthew Krishanu. Photo courtesy: Peter Mallet



Andrew Omoding
Animals to Remember Uganda
until 23 June 2024

Camden Art Centre is delighted to announce a major solo exhibition by Andrew Omoding (b. 1987, Uganda), following the success of his residency at the Centre in 2019. Omoding will repurpose abandoned materials and objects, interweaving them with new metalwork produced in a London foundry, music, and video in an installation that embraces the characteristic exuberance and generosity of his practice

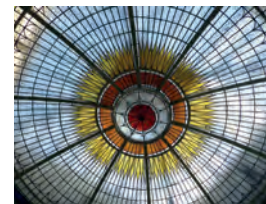
Bird, Andrew Omoding. Photo courtesy: Andrew Omoding and ActionSpace

Art Centre, Café & Garden: Tue-Sun 11am-6pm; Thu 11am-9pm
Camden Art Centre, Arkwright Road, NW3 6DG

Nearest Station: Finchley Road (Underground); Finchley Road and Frognal (Overground)
T +44(0)20 7472 5500 E info@camdenartscentre.org W www.camdenartscentre.org



Keats Community Library is open to all



- **The adult library** has a huge variety of books to borrow, from literary fiction to crime, biography, history, cookery, travel, and an amazing selection of books on art. Join our monthly reading group
- **Attend evening cultural events.** Previous events have included talks by Sir David Hare, Dame Margaret Drabble and Sir Michael Palin; celebrity conversations with Sir Derek Jacobi and Simon Russell Beale; talks by local artists; and readings by Dame Janet Suzman and Simon Callow
- **High quality used books** are always on sale. The giant spring and autumn book sales are legendary
- **The children's library** has a wide range of books for all ages, with regular activities such as Rhyme-time for under '5s on Tuesday and Friday mornings, ballet classes, and chess classes for '6yrs+ every Saturday afternoon
- **Other children's events** such as author readings, with Julia Donaldson for example, a magician, film school, and art activities

The library is run by volunteers and an apprentice. It is truly a community library – run by the community for the community. Drop in anytime to our beautiful Grade II listed building



Opening Hours:

Tuesday and Wednesday 10–6 • Thursday and Friday 10–7 • Saturday and Sunday 12–4

To learn more, see our website: keatscommunitylibrary.org.uk

To join our mailing list, email: keatscommunitylibrary@gmail.com

Keats Community Library, 10A Keats Grove, NW3 2RR ☎ 0207 431 1266

KCL Events are generously supported by





Summer Events at the Library

Thursday June 6th 7.30-9pm

Julia van Beuningen: Cello Recital

After receiving her undergraduate diploma in The Netherlands, Julia completed a postgraduate degree at the Royal College of Music. She has performed with major orchestras in London and chamber orchestras in Europe. Julia will play two cello solo suites by Bach and one solo suite by Caspar Casado. Tickets £10



Monday July 1st 7.30 - 9pm

Astrid King & Bob Lileks: A Funny Woman



And a Very Funny Evening! Astrid's mother, Peg Lynch, rose to become a comedy legend in America. Astrid, and writer and broadcaster Bob Lileks, will chat about her life, tell anecdotes, show clips from her shows and perform some of the funniest sketches

"Who was Peg Lynch? Only the first woman to create, write, star in and own both her own radio and then television situation comedy series. A pioneer. A ground-breaker. Writer of over 11,000 radio and television scripts. Her creation, Ethel and Albert, became one of America's most popular husband-and-wife comedies from the day it was first heard in 1938 and for the next 75 years Peg was heard or seen either on all major networks, either on radio or TV or live onstage.

Devoted fans of her show included James Thurber, Jack Benny, George Burns & Gracie Allen, John F. Kennedy, Orson Welles, Charles Laughton, Marlene Dietrich, Eleanor Roosevelt, Golda Meir, Basil Rathbone, Tyrone Power, Margaret Hamilton, the Wicked Witch from The Wizard of Oz, was a regular on Ethel and Albert. Audiences don't just leave laughing, they learn something about a great star in American culture." Tickets £15

Tickets from the Library or online at www.wegotickets.com All proceeds to keep the library open

Keats Community Library, 10A Keats Grove, NW3 2RR ☎ 0207 431 1266

KCL Events are generously supported by 

1975-2023

Heath Walks: 2024

Walks are normally held on the first Sunday of every month except January. Many start from Burgh House, New End Square. London NW3 1LT – 10 minutes walk from Hampstead Tube Station (for map see www.burghhouse.org.uk).

NB: *Parking is difficult locally; especially on fine weekends; the West Heath car park (behind Jack Straw's Castle) is more likely to have spaces than the East Heath car park.*

Advance booking not required except where indicated; simply turn up at the meeting place 5–10 minutes before the start times. Walks last approximately two hours. They do not necessarily follow made-up paths, so you are recommended to wear suitable footwear as conditions may be rough or muddy.

At the beginning of each walk you will be invited to make a minimum donation of £5 per adult to help support future walks programmes and to promote the Society's activities generally. You will also be encouraged to become a member of the Society – one of England's oldest and most respected conservation charities – if you are not one already.

Children are always welcome so long as they are suitably shod, can walk reasonable distances and are accompanied by an adult taking full responsibility for them.

Further information from the walks organiser,
Thomas Radice

mobile: 07941 528 034 or

email: hhs.walks@gmail.com

Further walks will be announced in the next Newsletter. Details of walk programmes will be available on the Society's website:

www.HeathandHampstead.org.uk

 ***@HandHSocHeath***

Sunday 5 May 2.30pm (meet at **Burgh House**) **Life in the clouds, up amongst the stars – a walk in Hampstead Town.** *Life in the clouds, up amongst the stars – a walk in Hampstead Town Media and astronomical stars, scientists and instruments, extreme weather, literature and poetry, plus music, comedy and chocolate (yes chocolate) in space.* Led by Lester Hillman, former visiting professor, academic adviser, awards winner, writer and lecturer. He has travelled to astronomical sites around the world including Venus Point in the Pacific.

Sunday 2 June 2.30pm (meet at **Burgh House**) **Spider foray** led by Edward Milner, former BBC producer and National Spider Recorder for Middlesex and London; author of *Trees of Britain and Ireland*.

Sunday 7 July 10.30am (meet at **Spaniard's End**, by the flower stall near the Spaniard's Inn) **Please note morning start; this is a linear walk and ends at St John's, Hampstead Parish Church, Church Row, NW3 6UU. Constable and Hampstead** led by Suzanne Grundy, qualified walk leader.

Sunday 4 August 2.30pm (details to be announced).

Sunday 1 September 9.30am (meet at **Burgh House**) **Birds of the Heath** led by Pete Mantle, member of the Society's Heath Sub-Committee.

Sunday 6 October 2.30pm (details to be announced).

Sunday 3 November 10.30am (meet at **Kenwood Walled Garden**, off Hampstead Lane) **The Hidden Heath: signs of the Heath's past** led by Michael Hammerson, a Vice-President of the Highgate Society and member of the Society's Heath Sub-Committee.

Sunday 1 December 10.30am (details to be announced).

